



Planet Indonesia

# Annual Report

2018

Dear readers,

Thank you for your support of Planet Indonesia and taking the time to read our annual report. We are proud of our recent successes and our theory of change, and look forward to sharing them with you.

What separates Planet Indonesia from other conservation organizations is our theory of change. We believe that conservation issues are people issues. When we approach tackling a conservation issue within a community, we always go straight to the people. In order for there to be lasting species protection and conservation of forests and oceans alike, local communities must be given the opportunity for socioeconomic empowerment, and ultimately, be involved in the decisions that affect them and their surrounding ecosystems.

We link conservation solutions with human well-being of local communities in West Kalimantan, Indonesian Borneo. We are proud to gather input from local community members, and based on their needs, provide programs and services that will incentivize conservation. This means anything from providing health care, education in reading and writing, and financial services such as start-up capital and loans for new businesses. These services have changed people lives, and in the process, have changed the environment around them. This process also changes how people view the environment in their daily lives. We are developing conservation champions that will be empowered to protect their environment and teach future generations.



Since our first year in 2014, Planet Indonesia has continued to refine our model based on community needs, expand to different areas of Indonesian Borneo, and gain new members of our conservation cooperatives. We are extremely proud of the support we have in local villages and our collaboration with the Indonesian government. These partnerships demonstrate the trust local leaders have in Planet Indonesia and it is something our organization will never take for granted. I hope you enjoy this year's annual report, which highlights our theory of change and some impressive milestones we hit in 2018.

Thank you again for your time and support. After reading the report, I invite you to consider a donation to ensure that 2019 marks yet another year of success!

**Dylan Kitts**  
**President of the Board**



Dear friends, followers, and fellow activists,

It is with great pleasure that I have the opportunity to reflect on yet another year of success, growth, and impact at Planet Indonesia. As we come up upon the five year anniversary I cannot help but feel a deep sense of gratitude, admiration, and excitement for our work. It feels like only yesterday, myself, Novi, Deccy, and Rozzay were scrambling between coffee shops putting together the ideas and frameworks of our model for change. I can remember how in our first office my desk and mattress were just a few feet apart. It gave a new meaning to "bringing work home with you." Five years later, led by our commitment to community-based conservation, our impact numbers tell the story.

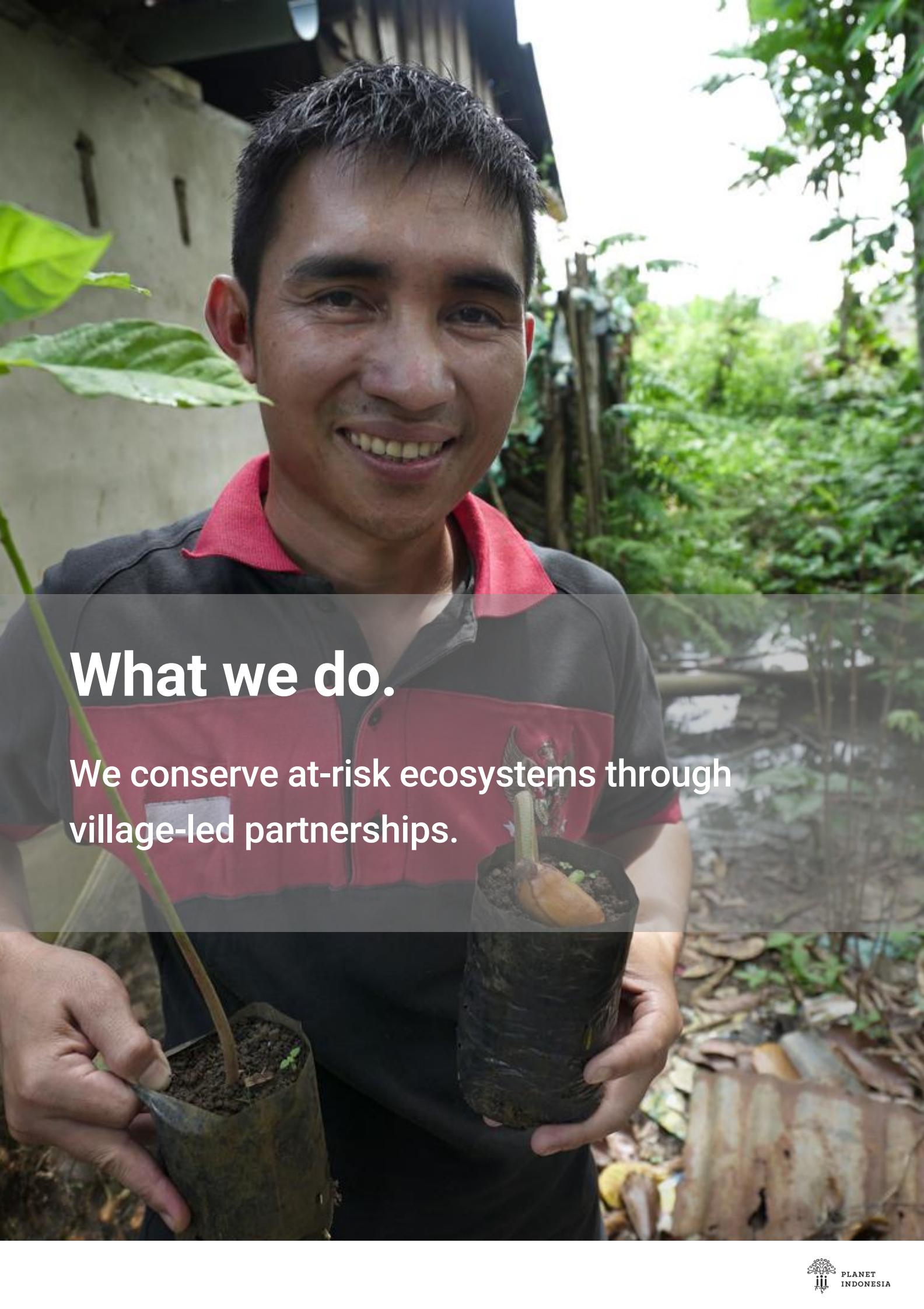


With over 50 staff, programs reaching over 15,000 individuals and protecting over 55,000 ha of primary forests, we are proud of what we have accomplished with our community partners. 2018 marked the launch of our community health program, construction of a new research station, and the creation of the songbird rescue and rehab center.

But most importantly, we are building a framework for community-based conservation that can be adopted around the globe.

2019 is marked by the beginnings of a plan to scale up our organization, with the goal of one day reaching a million individuals and the protection of a million hectares of forest and ocean. In West Kalimantan, our research station and rescue center will be finished over the next year and we plan to scope out new project sites in Indonesia. Where the hand of Planet Indonesia reaches, positive change follows, and we are blessed to have you join us in this journey.

Thank you,  
Adam Miller  
Executive Director



# What we do.

We conserve at-risk ecosystems through village-led partnerships.

# How we do it.

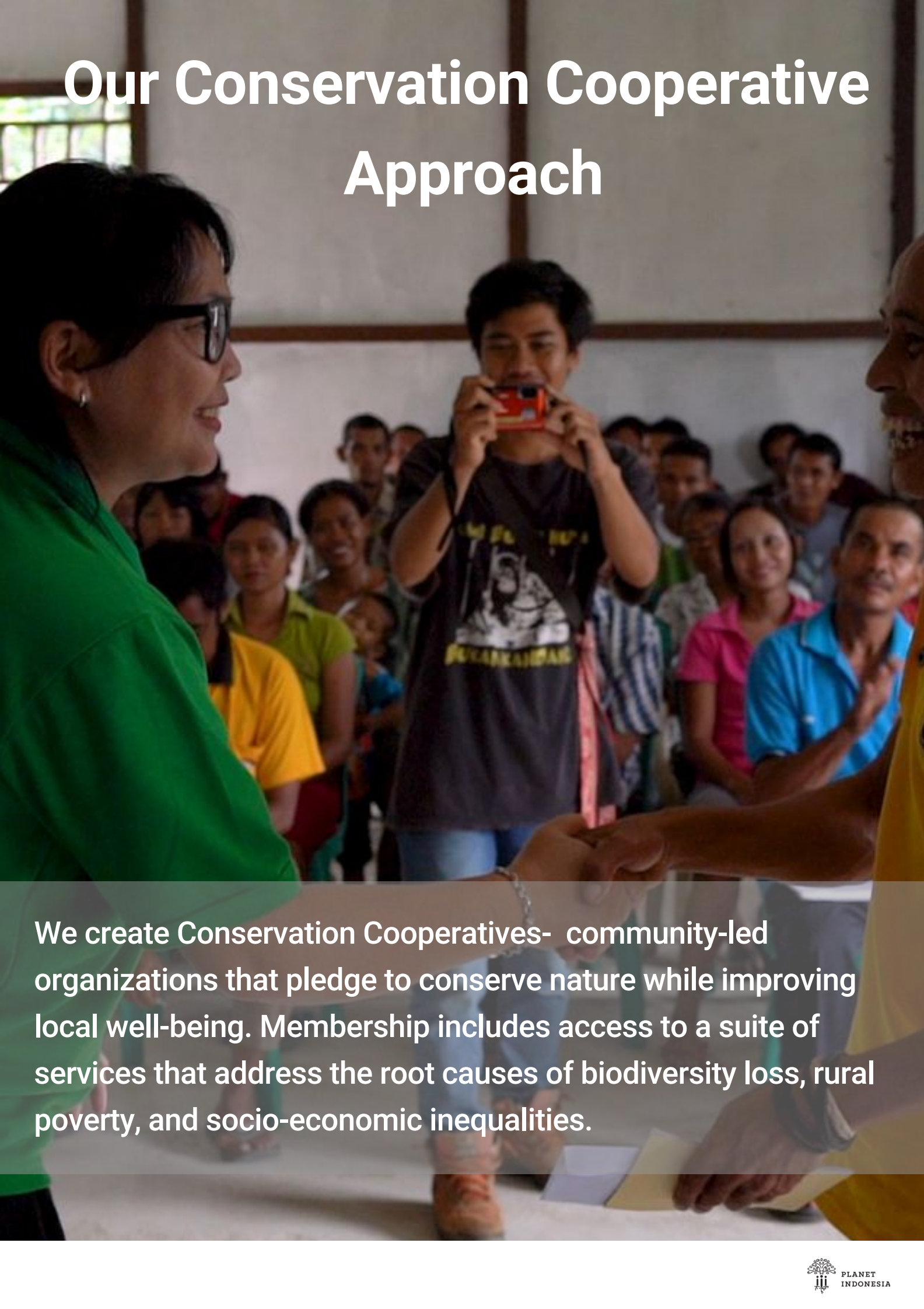
We work to reduce socio-economic inequalities in rural communities through community-based conservation.

A long-tailed macaque with reddish-brown fur on its head and back, and greyish fur on its chest and limbs, is perched on a tree branch. The background is a blurred forest scene with green leaves and grey branches.

# DRIVING CHANGE

Our model drives grassroots change through improving human well-being while acting as a vector to catalyze conservation. Dedication, consistency, and transparency is central to our work with local communities through interventions that make life better for all creatures on our planet.

# Our Conservation Cooperative Approach

A woman in a green shirt and glasses is shaking hands with a man in a yellow shirt. In the background, a group of people is seated, and one man is taking a photo with a red camera. The scene appears to be an indoor community meeting or presentation.

We create Conservation Cooperatives- community-led organizations that pledge to conserve nature while improving local well-being. Membership includes access to a suite of services that address the root causes of biodiversity loss, rural poverty, and socio-economic inequalities.

# Creating Community Governance Platforms

Our Conservation Cooperatives help overcome obstacles to community-based conservation by creating a platform that drives *grassroots governance of biodiversity*. Members who join receive access to a suite of services while also joining a committee that manages and conserves nature and is self-sustaining into the future.



# A Growing Grassroots Movement

We started as a team of four working in one village with just 17 households enrolled in our program. Since 2014, we have grown to a team of over 50 staff, reaching over 15,000 individuals across 3,000 households, managing more than 65,000 ha of Bornean rainforest and high-carbon mangrove forest.



# Expansion On the Horizon

In 2019, we are scoping out new project sites, improving our monitoring and evaluation systems, and partnering with new villages in our current project sites. This year we will also begin training programs with other NGOs in Sumatra, Java, and Eastern Indonesia who are interested in adopting our impact-driven approach. Together with our government, private, and village-partners, we are growing a powerful movement.

# IMPACT



15,000+

Individuals reached through our programs



45,000 ha

Terrestrial rainforest protected



7,000 ha

Carbon-rich mangrove forest protected



\$37,875

Funds in Conservation Cooperatives



87%

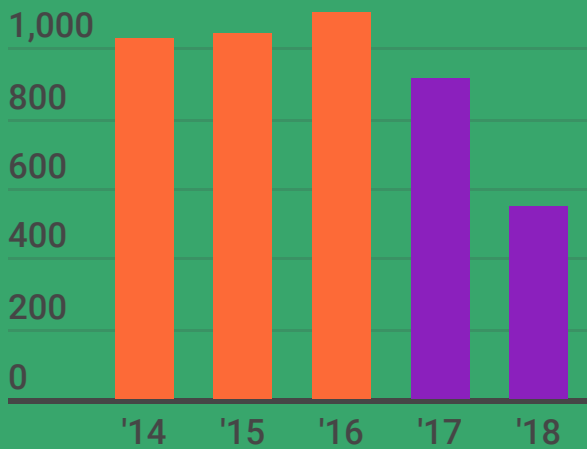
Amount of total budget spent on program activities



\$7.50

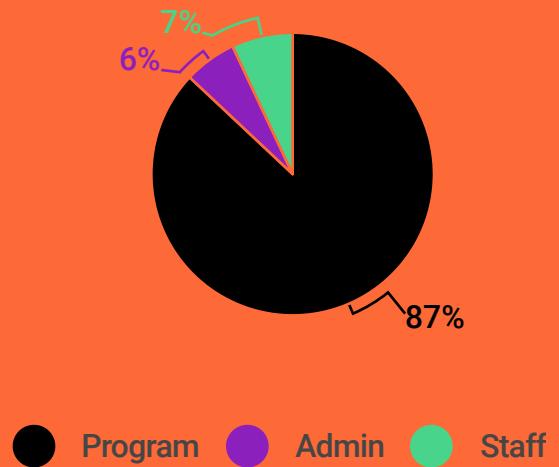
Average cost of our programs to protect just 1 hectare of forest

## DEFORESTATION DROPS



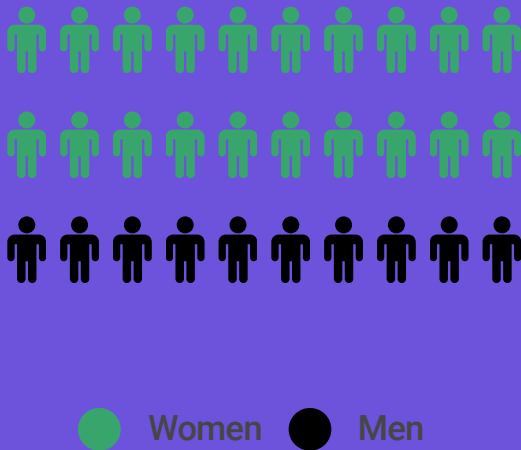
Tree cover loss has dropped by over 60% in our project sites within just 2 years of our interventions.

## INVESTMENT IN PARTNERS



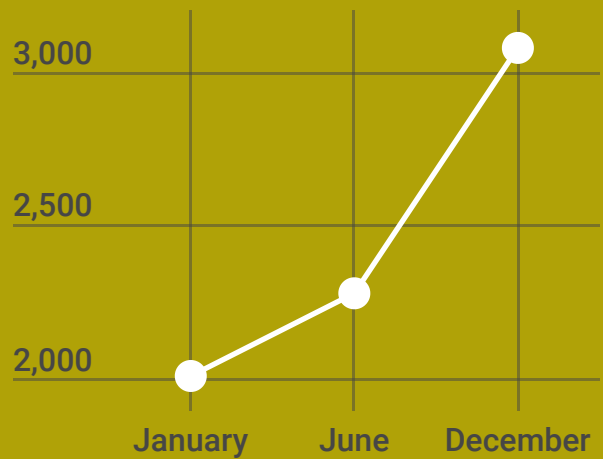
87% of all our expenses in 2018 went directly to supporting conservation and communities in Indonesia

## GENDER FOCUS



Over 65% of our individuals receiving benefit from our programs are women.

## ENROLLMENT GROWTH



Over 15,000 individuals received benefits from our programs in the 2018 year.



From the Planet  
Indonesia Team,  
thank you all for your  
continued support.